

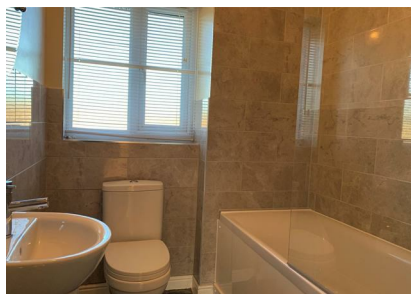


## Sorrel Drive, Thetford, Norfolk, IP24 2YJ

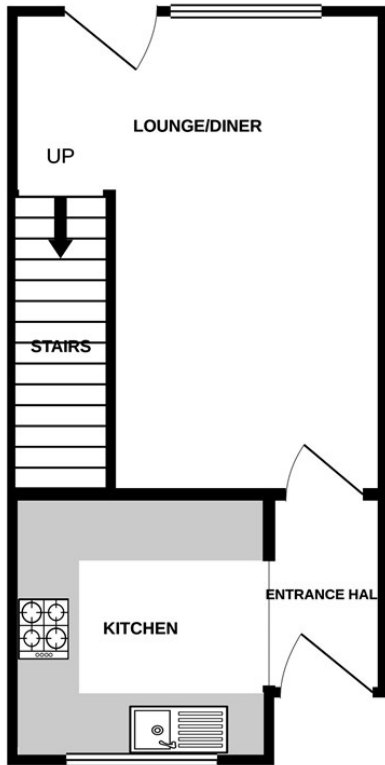
Rent - £1,000 PCM      Deposit - £1,153

Situated on the popular Sorrel Drive in Thetford, this well-presented mid-terrace home offers comfortable living accommodation ideal for first-time buyers, couples, or small families. The property features two bedrooms, a spacious lounge, a fitted bathroom, and a bright, practical layout throughout. The home is well maintained and offers excellent potential for buyers looking to add their own personal touch.

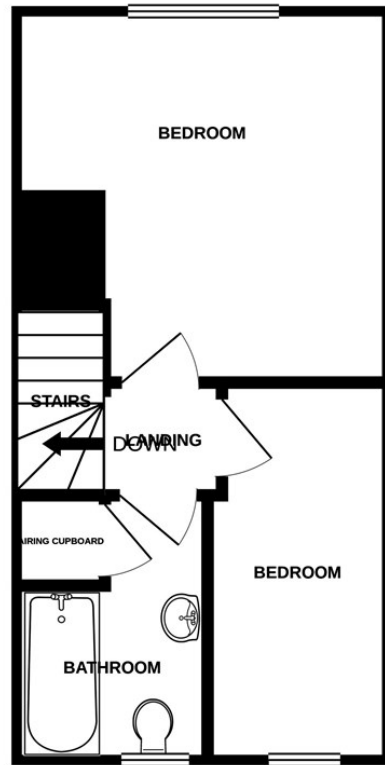
- MID TERRACED HOME
- 2 BEDROOMS
- OFF ROAD PARKING
- GARAGE
- CLOSE TO TOWN CENTRE
- GAS HEATING - EPC C
- ENCLOSED REAR GARDEN
- MODERN BATHROOM



GROUND FLOOR  
276 sq.ft. (25.6 sq.m.) approx.



1ST FLOOR  
274 sq.ft. (25.5 sq.m.) approx.



TOTAL FLOOR AREA : 550 sq.ft. (51.1 sq.m.) approx.

Whilst every attempt has been made to ensure the accuracy of the floorplan contained here, measurements of doors, windows, rooms and any other items are approximate and no responsibility is taken for any error, omission or mis-statement. This plan is for illustrative purposes only and should be used as such by any prospective purchaser. The services, systems and appliances shown have not been tested and no guarantee as to their operability or efficiency can be given.  
Made with Metrofox ©2020

